



Satellite based observations provide
information for decision making

Jyri Heilimo
Arctic Space Centre
Finnish Meteorological Institute

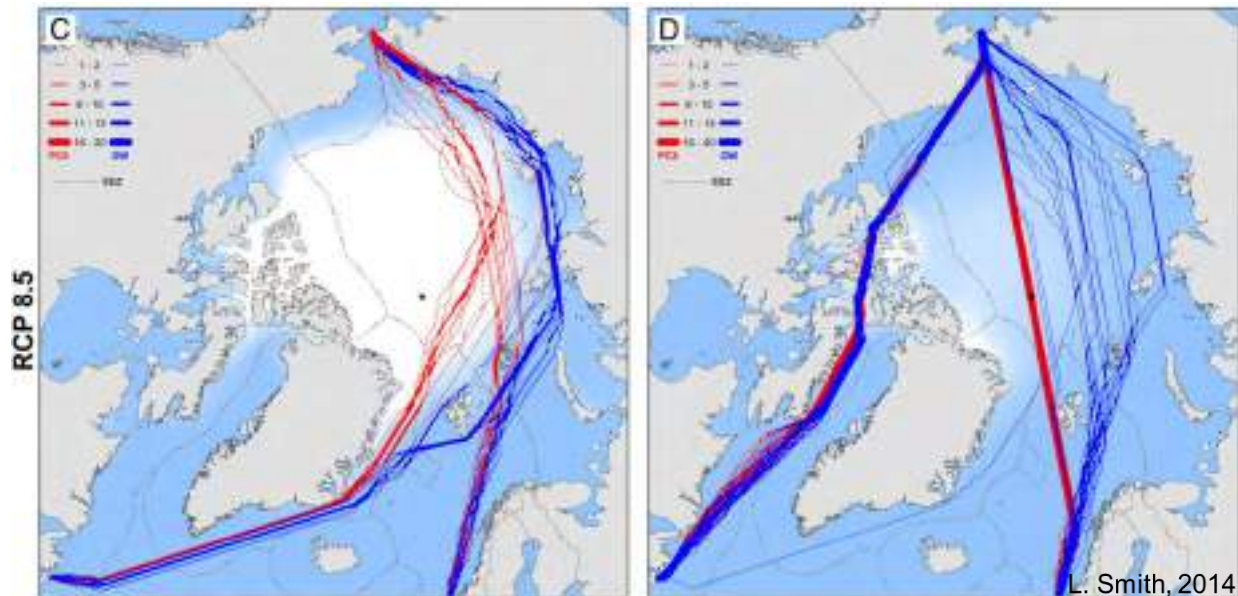


IPCC report and climate change

- Recent IPCC report laid down devastating figures of the impact of climate change and global warming.
- Urgent need to reduce carbon emissions to limit global warming to 1.5 degrees
- Warming in the Arctic is 2-3 times stronger compared low or mid latitudes
- Balance of human activity will inevitably move towards higher latitudes
- Spaceborne observations in high latitudes becomes more and more important to support educated decisions to mitigate the challenges we will face

Challenges in navigation in the Arctic

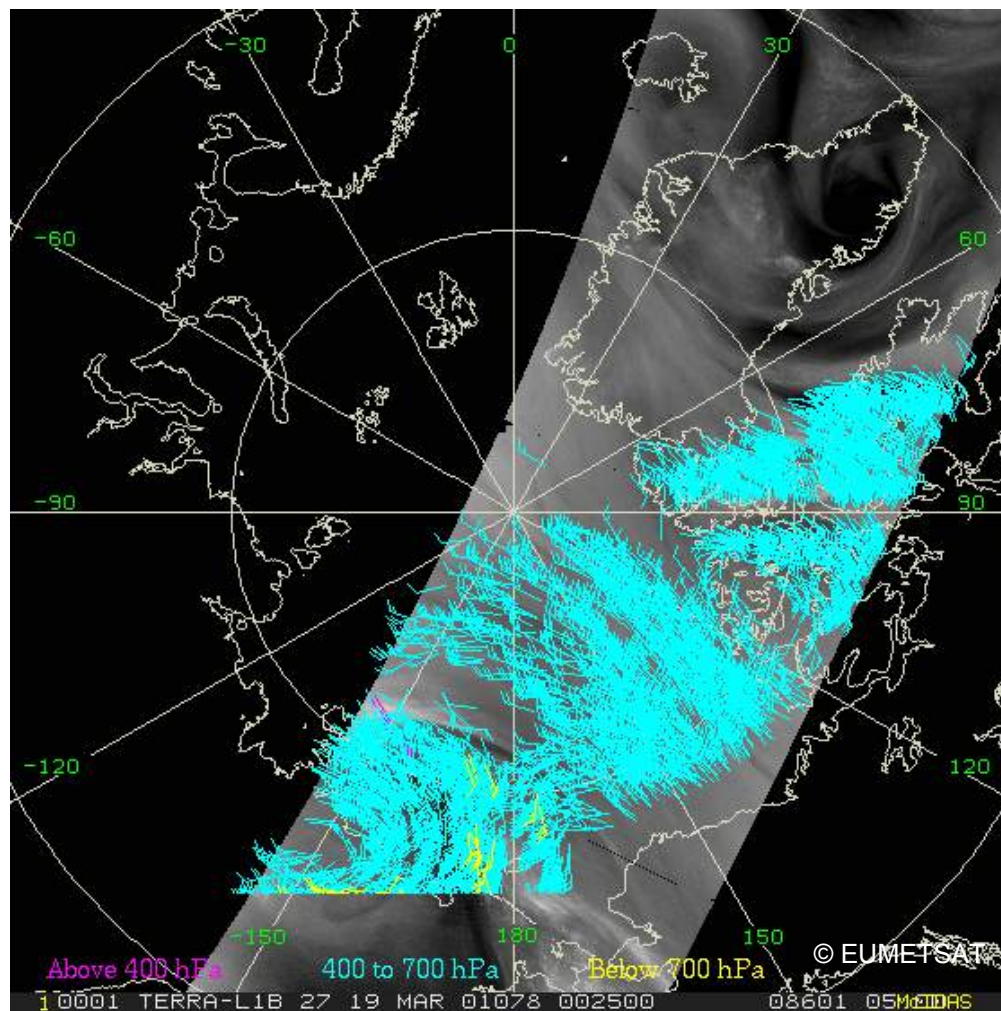
- Positioning
- Weather forecasting
- Situational awareness
- Environment monitoring
- Search and rescue
- Disaster management
- Communication



Arctic Sea Routes September 2006 - 2059



Challenges in weather forecasting in the Arctic





Challenges in positioning in the Arctic



- GNSS systems do not work in same accuracy as in mid-latitudes
- *SBAS is impeded* due geometrical disadvantages
- Ionospheric effects further reduce GNSS positioning accuracy

- Geostationary communication not usable in high latitudes
- Ground based communication network not dense enough



Challenges in situational awareness in the Arctic

Light purple line = coastline or fast ice edge

A = compact ice, 10-30 cm thick

B = very close ice, 10-30 cm

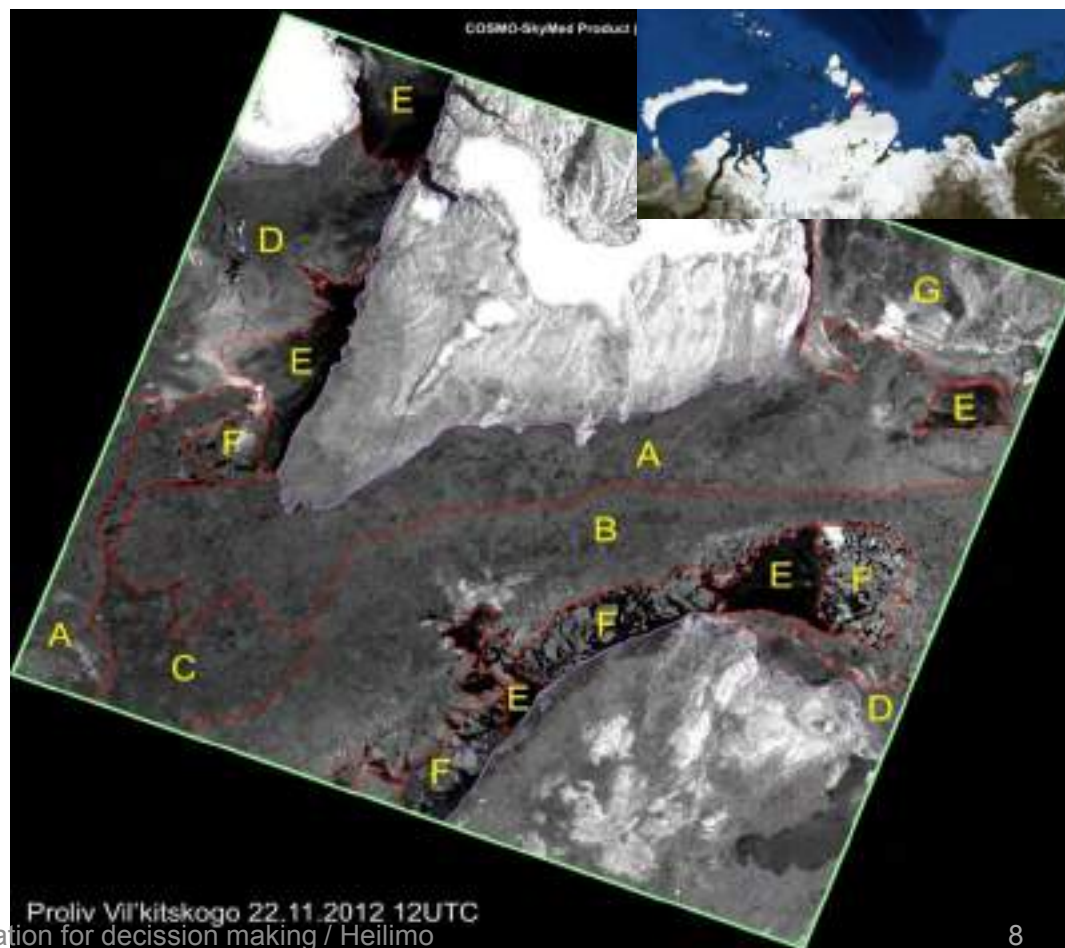
C = thick very close ice, 10-15 cm

D = new ice, < 10 cm

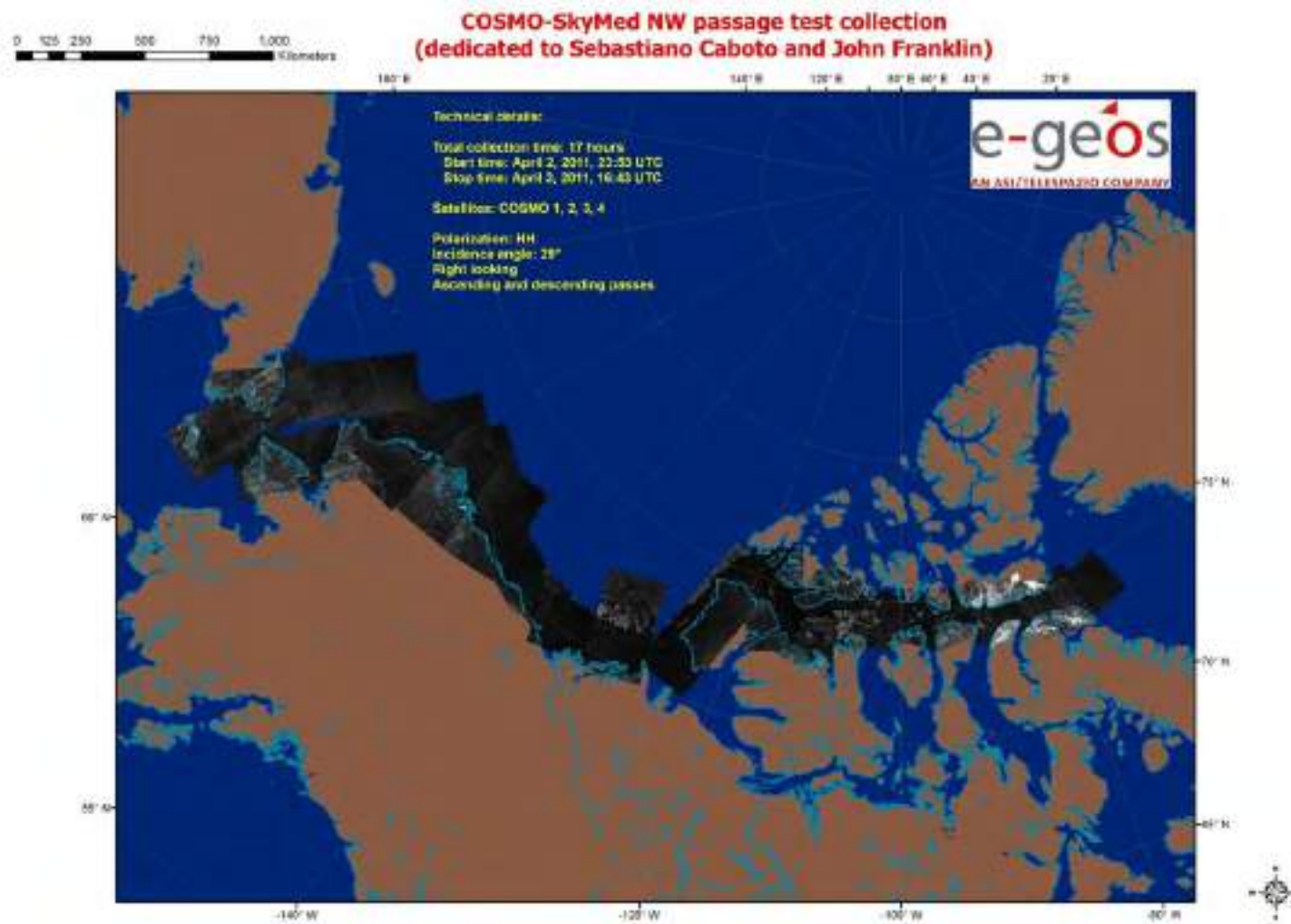
E = open water or new ice, < 5 cm

F = close ice, 10-15 cm

G = consolidated ice, 10-30 cm, rafted



Satellite imaging of NWP

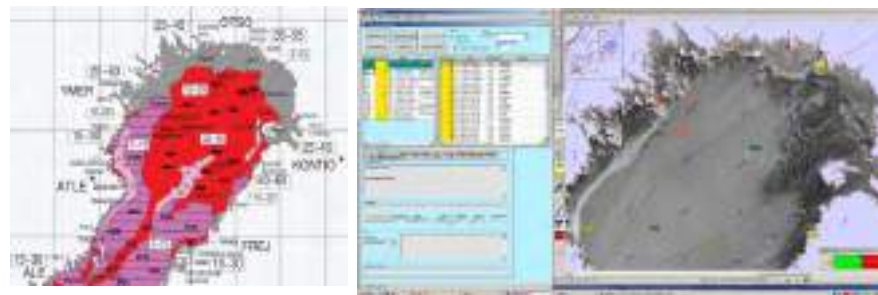
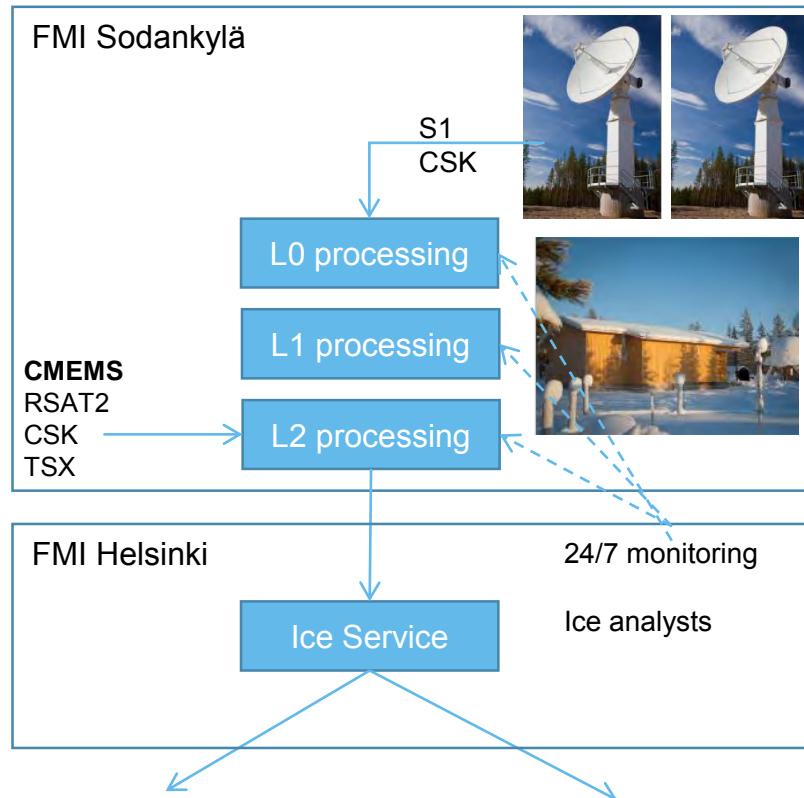


Baltic Sea Ice Monitoring

- Commercial and environmental needs
 - Finland is essentially an island
 - ~90% of Finland's import and export via sea routes
 - Gulf of Finland is one of the most busiest marine routes for oil transport
- Operative Service
 - Availability target 99.9%
 - Quasi-real-time / NRT needs
 - Daily products
- Customer:
 - Finnish Transport Agency
 - Finnish, Swedish, Estonian Ice breakers
- Operations:
 - Fully automated processing lines at Sodankylä
 - Operators and ice analysts in 2 shift
 - 24/7 monitoring of the processing lines

Data need:

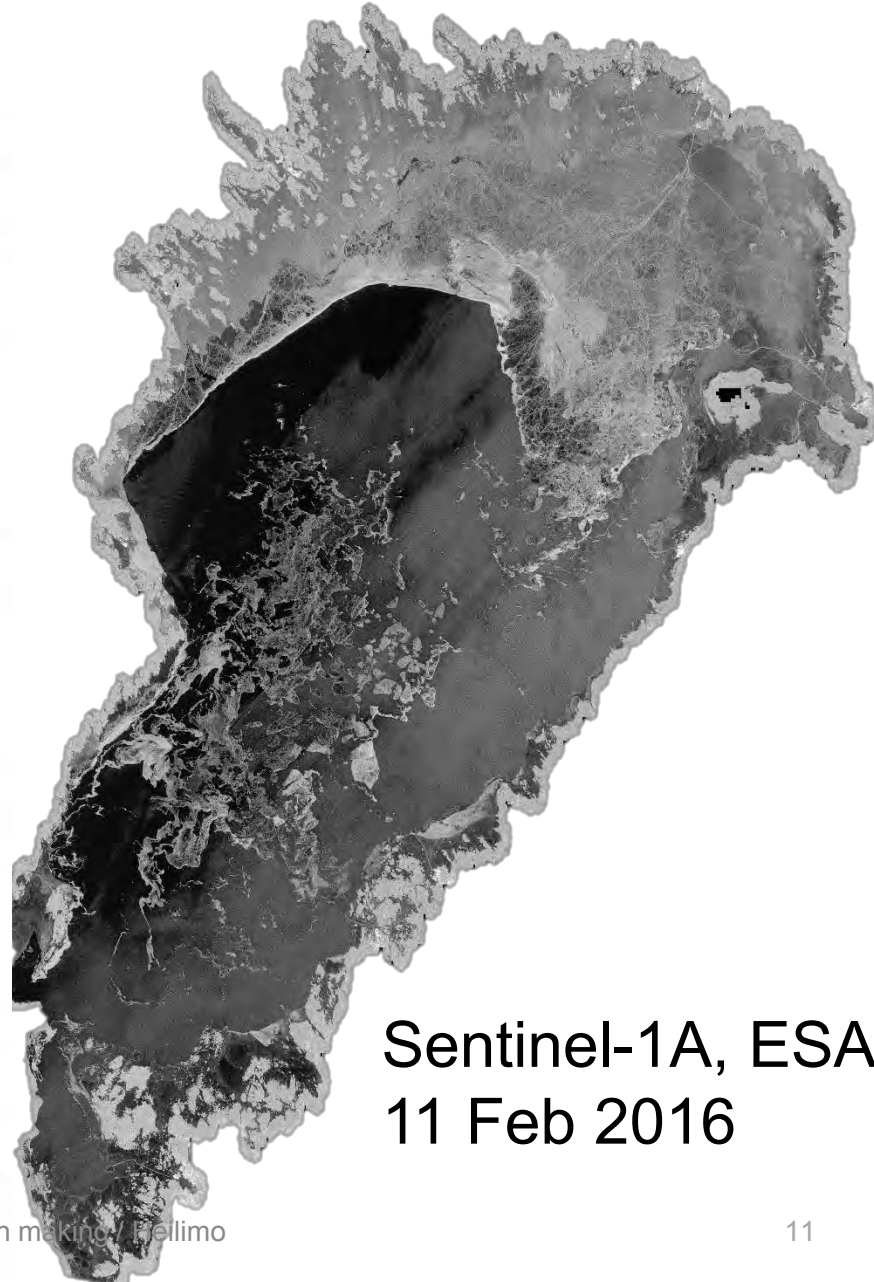
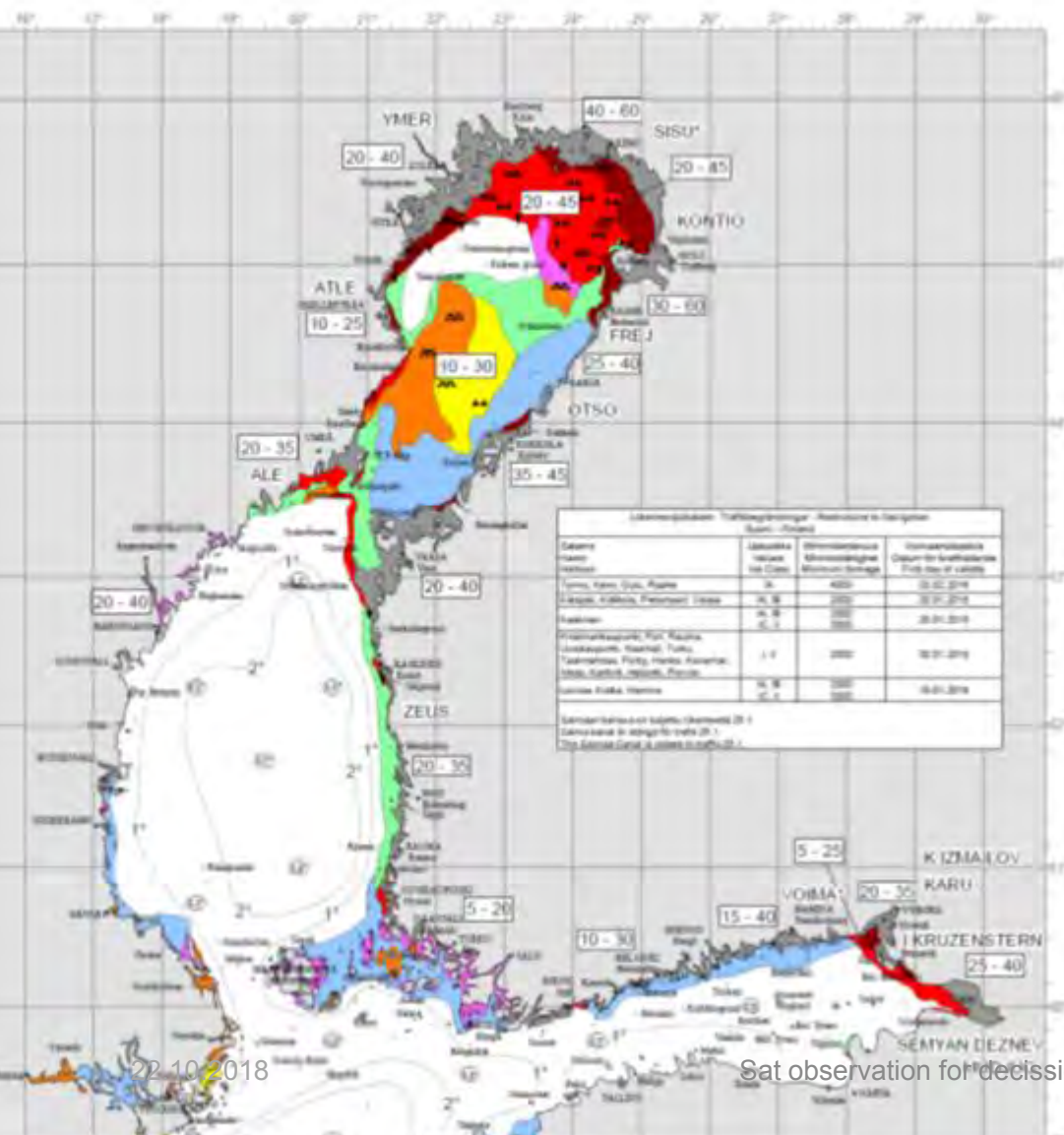
- Sentinel-1 EW HH+HV pass-through
- Radarsat 2, Cosmo-Skymed, TerraSAR-X
- AOI: Baltic Sea
- Time: Nov – May





Jääkartta Iskarta Ice Chart

N:o 61 11.2.2016

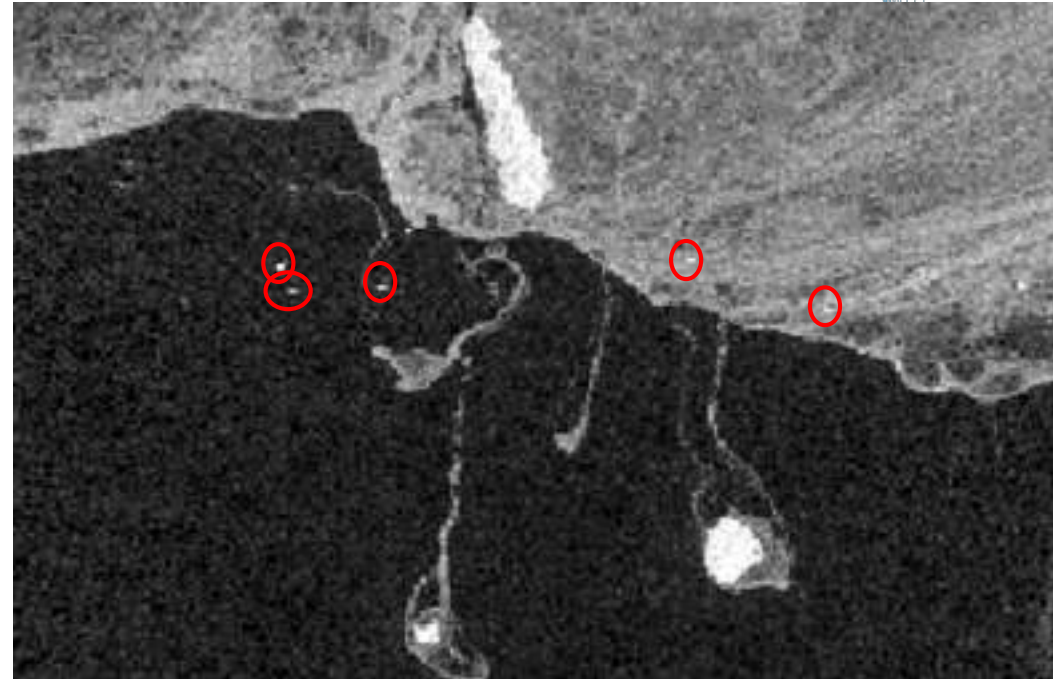


Sentinel-1A, ESA
11 Feb 2016



Vessel detection

- Satellite instruments can be used to detect vessels
 - Synthetic Aperture Radars are insensitive to weather and darkness
 - "Missing" ships
 - Illegal fishing
 - Illegal migration / human trafficking
 - Border control
 - Search and rescue





Oil spill detection



- Gulf of Finland is one of the busiest shipping lanes in the World
- 200 - 300 oil spills detected annually
- Detection of oil spills can be improved with spaceborne SAR
 - 200 x 200 km coverage single image
 - Clouds or darkness does not affect detection
 - Complements airborne surveillance

Space weather and space situational awareness

Authorities: Hazards



- Satellite and ground-based data
- Computer simulations
- Alerts and warnings



**Weather and Security
 Duty Officer**



**On-call
 Space scientist**

**Tailored
 guidance**

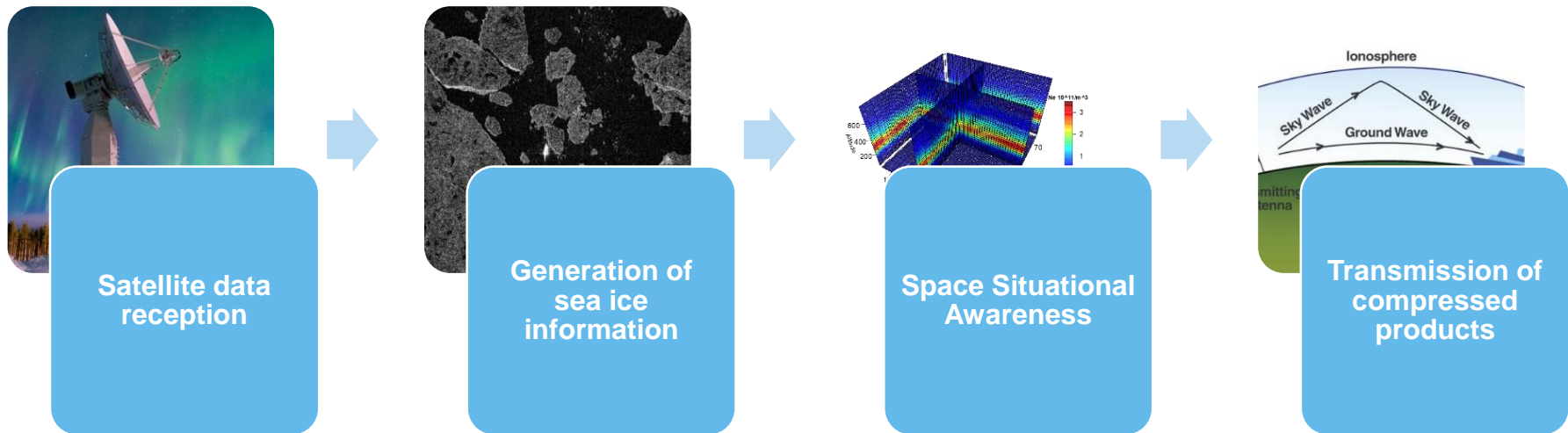


General public: Auroras





Improving navigation and safety in the Arctic Ocean





Water quality – River discharge





Water quality – Algae blooms





OMI tropospheric NO₂

OMI NO₂ - 2005

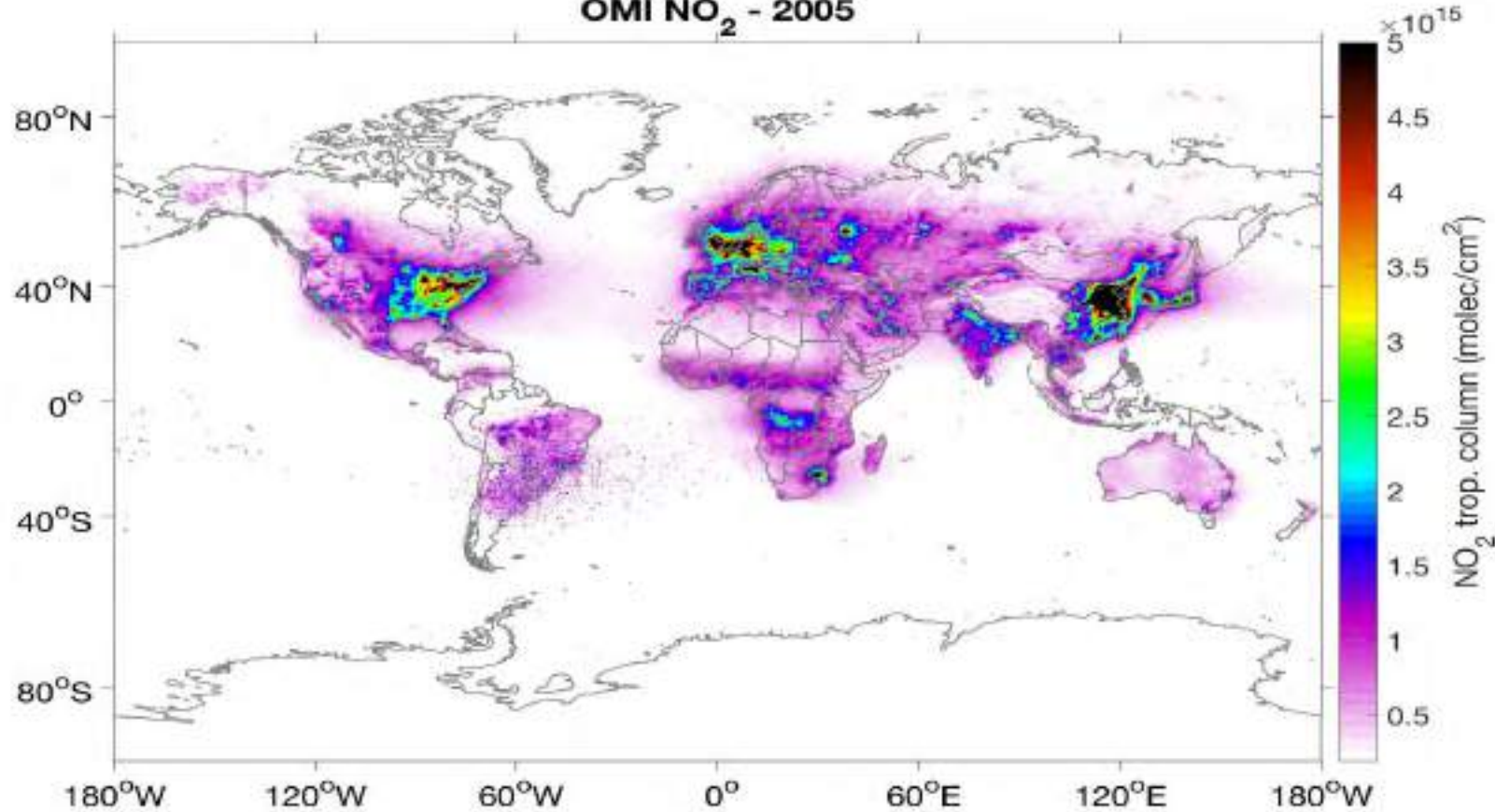


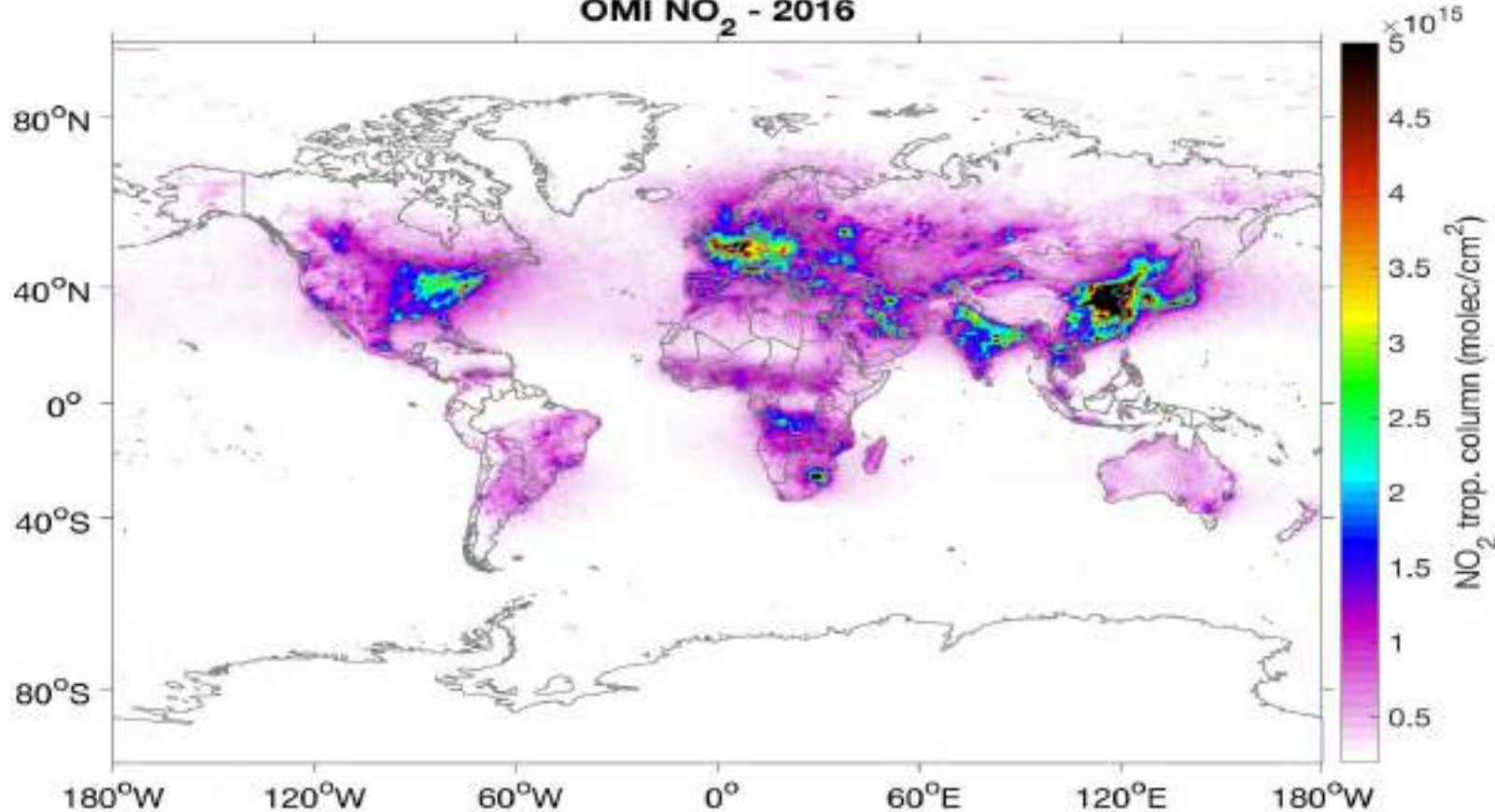
Figure: Iolanda Ialongo, Finnish Meteorological Institute

- NO₂ is a short-lived polluting gas, produced from fossil fuel combustion.
- Pollution decreased in USA and Europe as result of air protection policies, while increased in India and Middle-East because of the increasing industrial activities.
- In China polluting emissions started also decreasing a couple of years ago as consequence of new environmental policies.



OMI tropospheric NO₂

OMI NO₂ - 2016

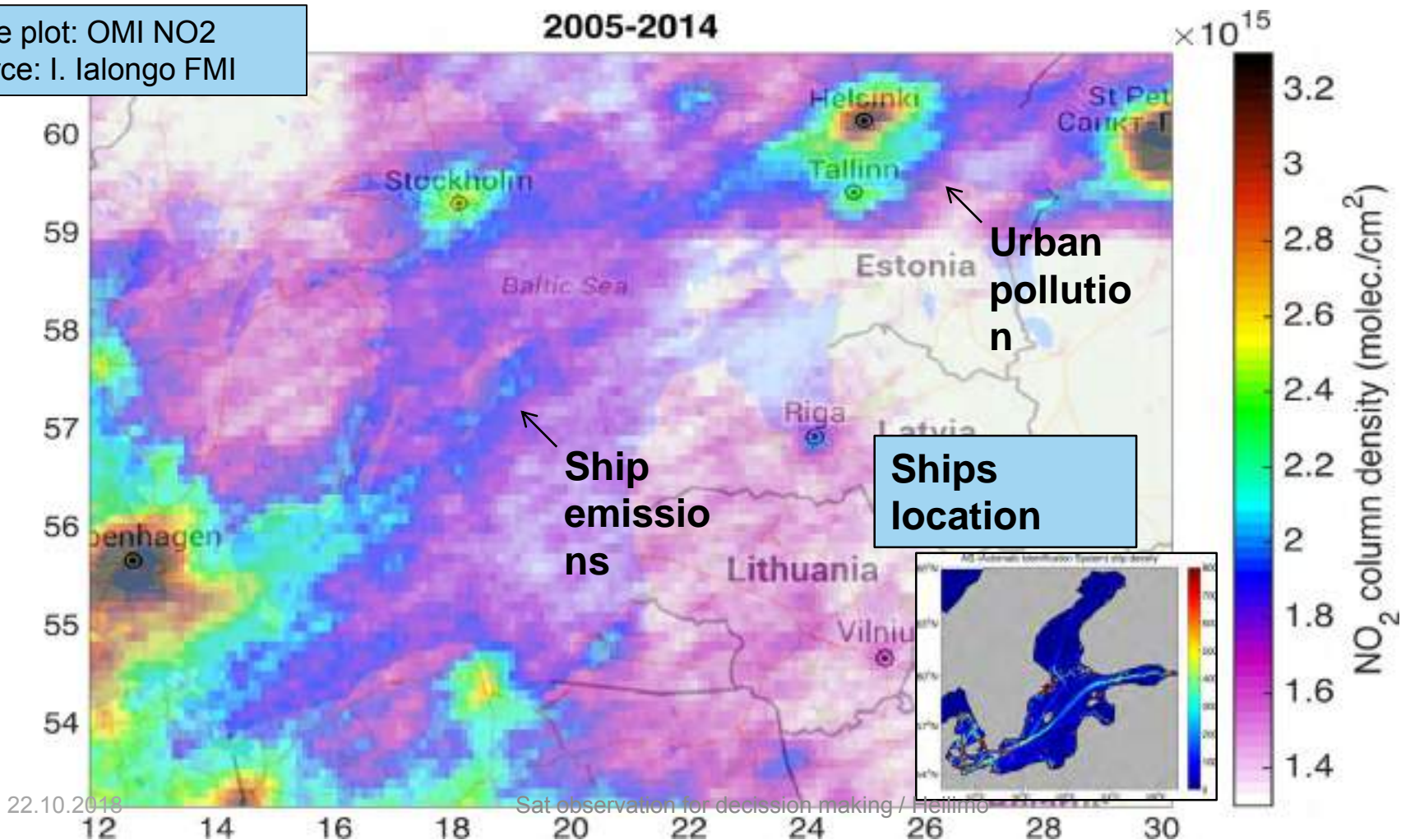


- NO₂ is a short-lived polluting gas, produced from fossil fuel combustion.
- Pollution decreased in USA and Europe as result of air protection policies, while increased in India and Middle-East because of the increasing industrial activities.
- In China polluting emissions started also decreasing a couple of years ago as consequence of new environmental policies.

Figure: Iolanda Ialongo, Finnish Meteorological Institute

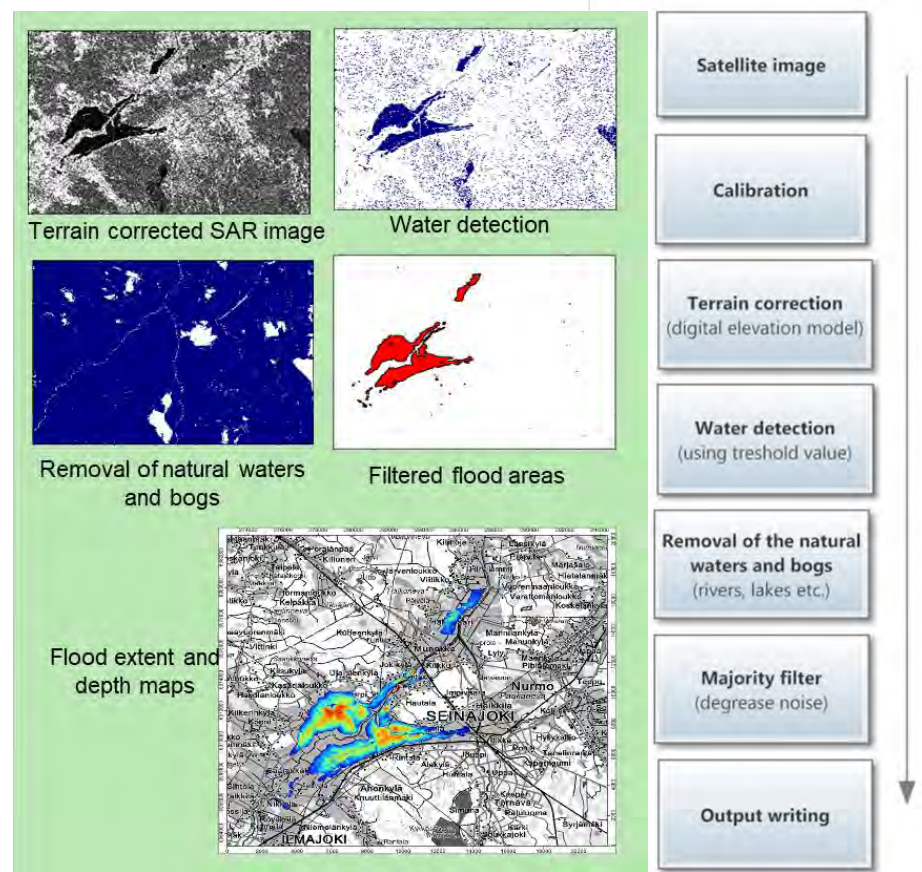
Monitoring Air Quality in the Baltic region: preparation for S5P exploitation

In the plot: OMI NO2
Source: I. Jalongo FMI



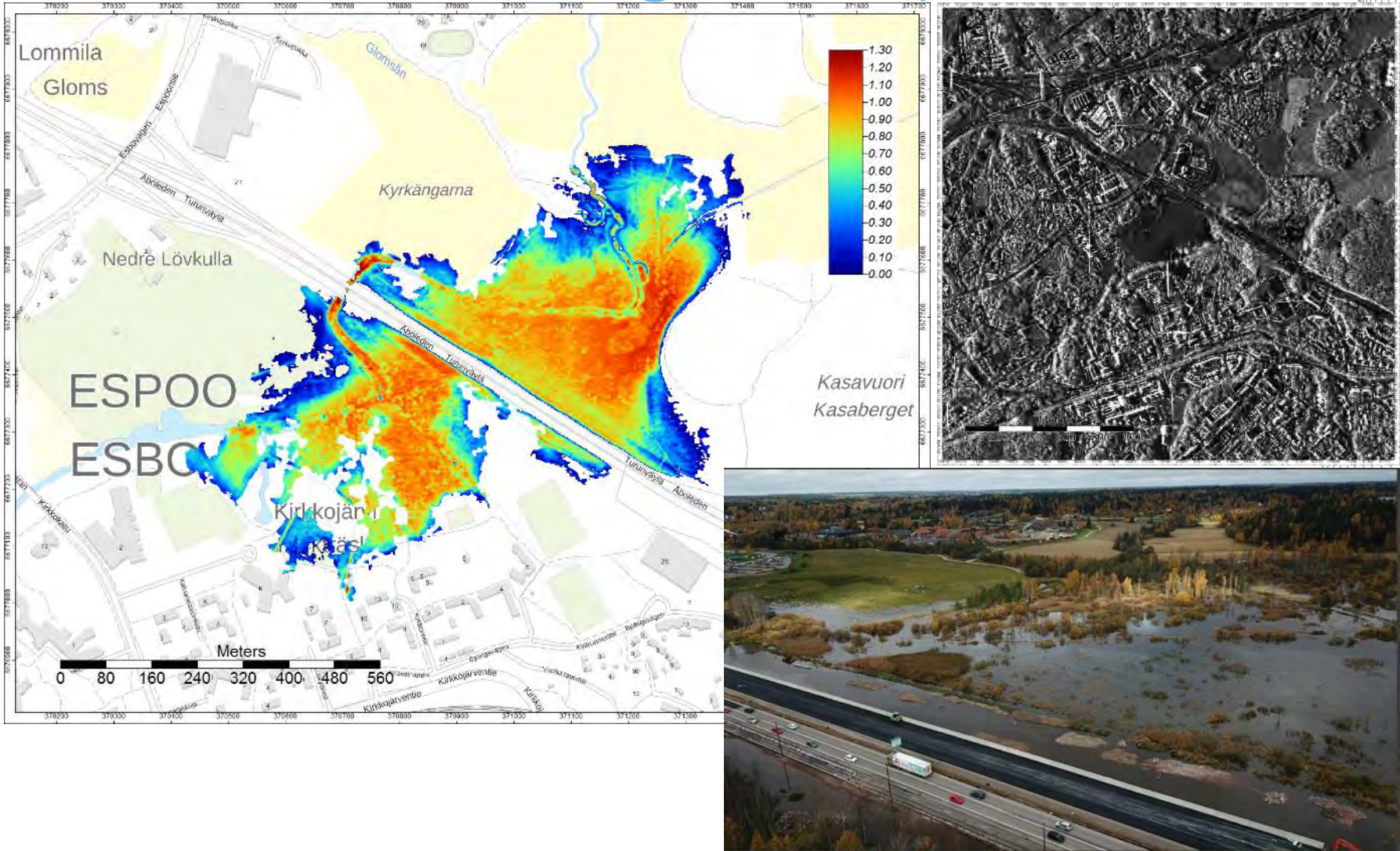
Flood detection and monitoring

- Annual flooding of rivers in Bothnia
 - Spring floods due snow melt
 - Autumn floods due heavy rains
- Operational service for regional authorities
 - Flood covered area, Flood depth
 - Forest floods





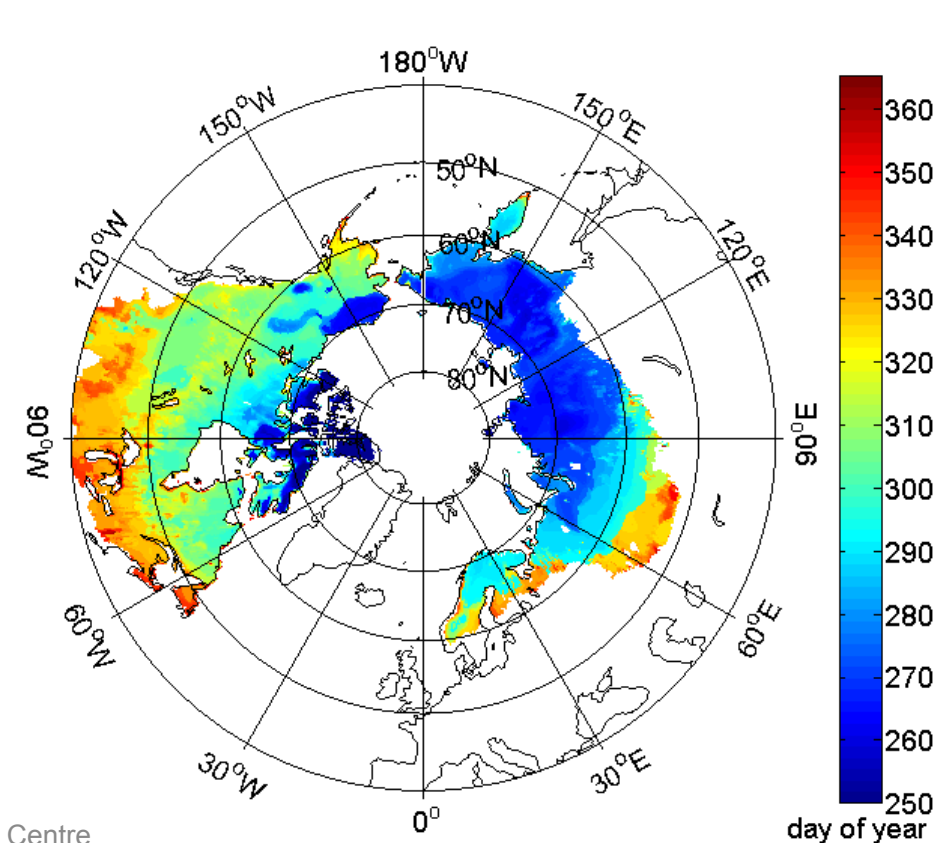
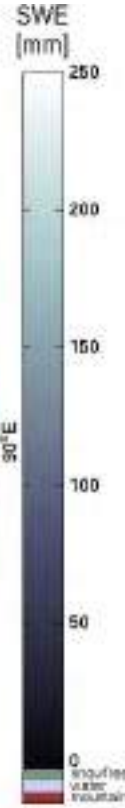
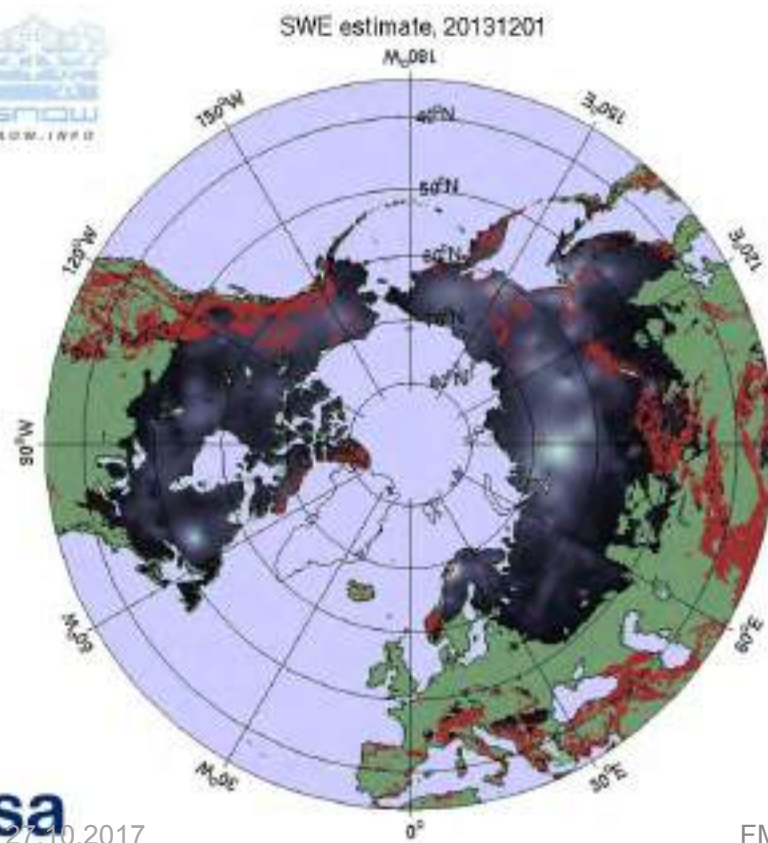
Autumn flooding at Espoo 2017





Snow cover and soil frost of the Northern Hemisphere from Microwave Radiometer Satellite Data

Snow mass (SWE) in 1 Dec. 2013 and the day of soil freezing in autumn/winter of 2013 using U.S. DMSP SSMIS and ESA SMOS satellite data



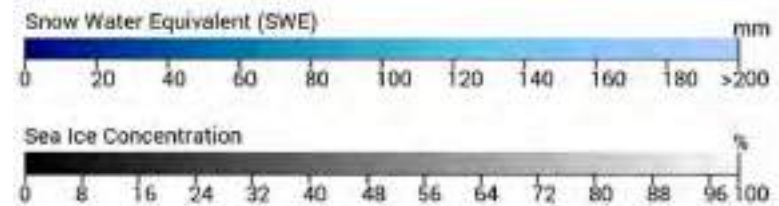
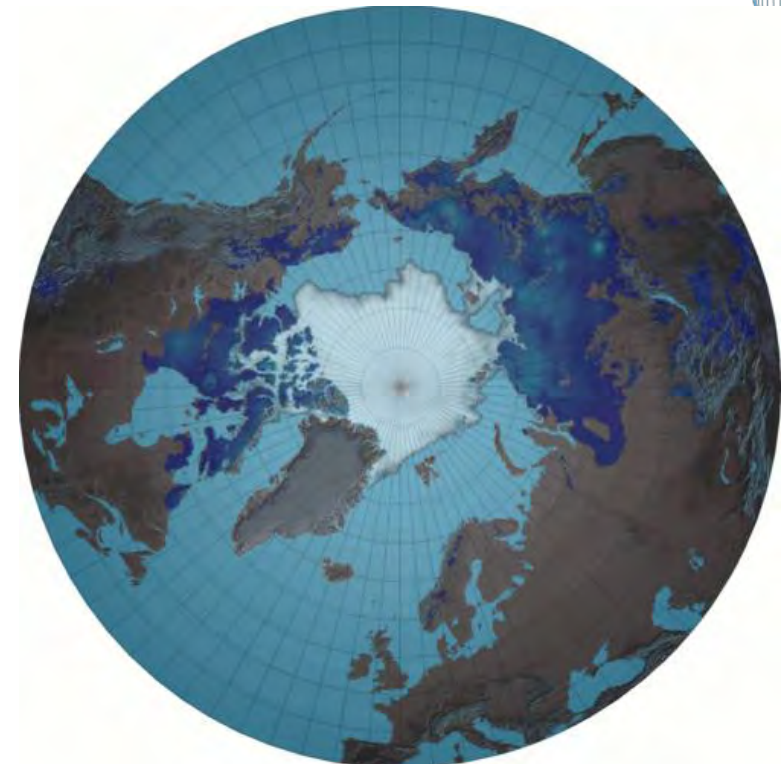


Snow and ice in the Arctic:

Spaceborne data-derived information for climate research and NRT-applications

- Atmospheric phenomena and their interaction with biosphere and cryosphere
- Snow covered area
- Snow water equivalent
- Seasonal frost / thaw
- Permafrost
- Sea ice
- Hydrology

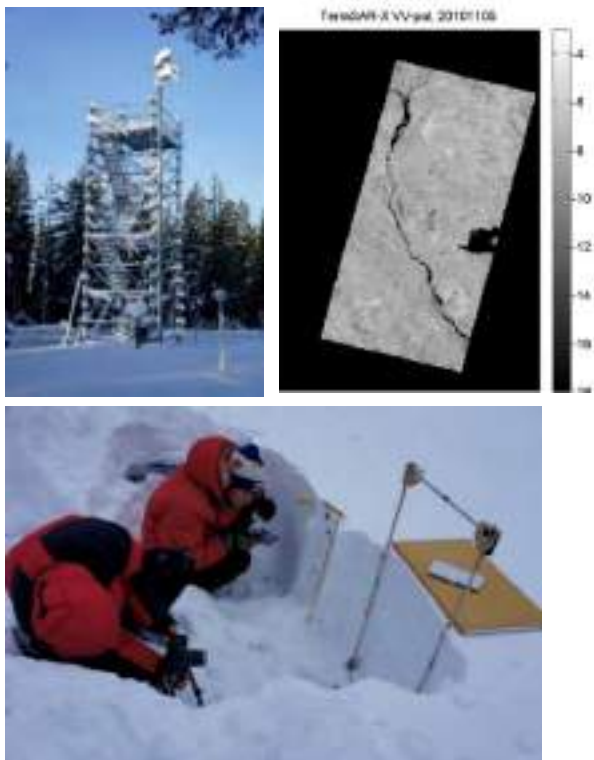
Snow Mass and Ice Cover (12 Oct. 2017-6 Dec. 2017)



DEVELOPING REMOTE SENSING CAPABILITIES

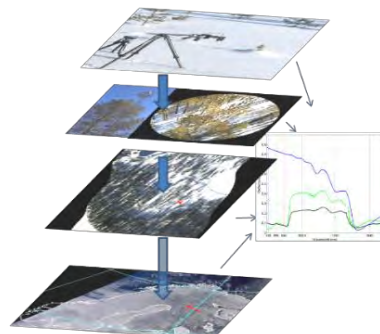
EXPERIMENTS

Campaign datasets, ...

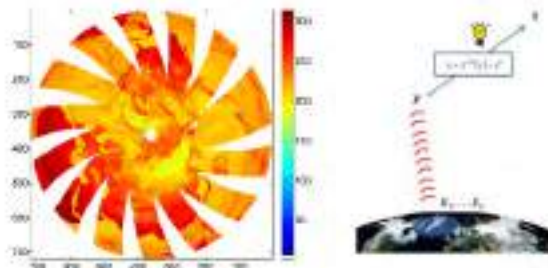


PHYSICS

...model development...

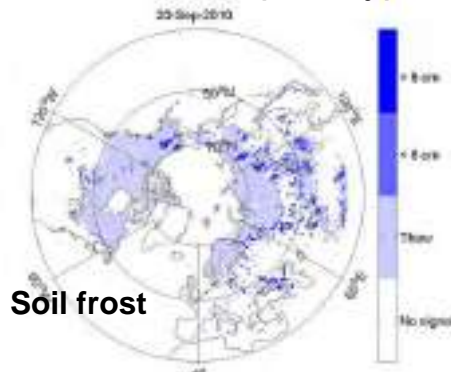


...for better understanding of satellite observations

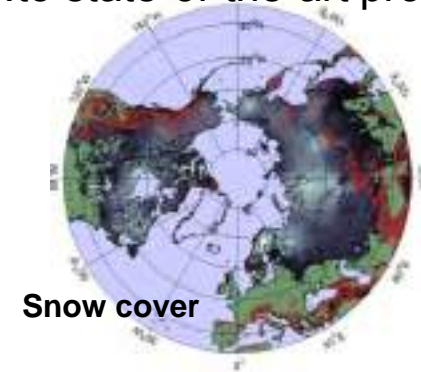


APPLICATIONS

From innovative prototypes...



...to state-of-the-art products





Future needs for the Arctic – HEO Mission

- **Improved imaging**
 - Weather forecasts, winds
 - Sea state, Sea ice conditions
 - Snow and ice cover
- **Improved positioning**
 - Navigation in Arctic ocean
 - Arctic communities
 - Search and rescue
- **Improved communication**
 - Satellite communication
 - HF-communication
- **Improved situational awareness**
 - Space weather



Contact info:

Jyri Heilimo

Arctic Space Center

Finnish Meteorological Institute

Erik Palménin aukio 1

P.O.Box 503

FIN-00101 Helsinki

Finland

Tel: +358 50 568 0802

Email: jyri.heilimo@fmi.fi

